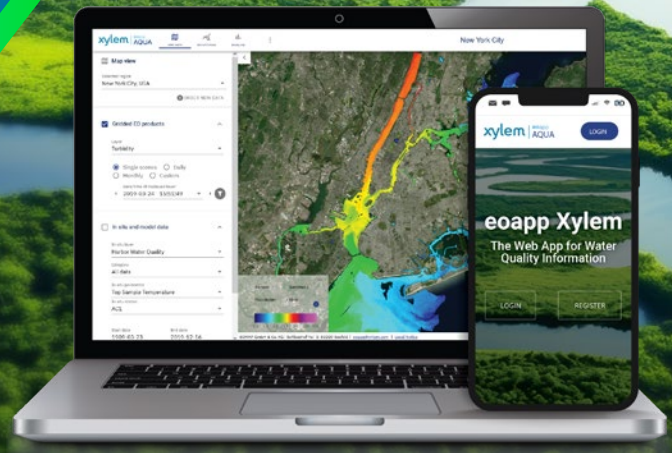


# xylem

Created in  
partnership with

## EOMAP



## Satellite water quality data

eoapp AQUA is a web-based platform to generate, visualize, and analyze water quality data calculated from remote sensors using physics-based algorithms






Developed with the expertise of EOMAP, this innovative solution monitors key water quality parameters such as turbidity, chlorophyll, harmful algal bloom indicators, and more with satellite-based water quality sensors.

### Benefits

eoapp AQUA is a cloud-based data visualization platform that transforms satellite data into actionable insights.

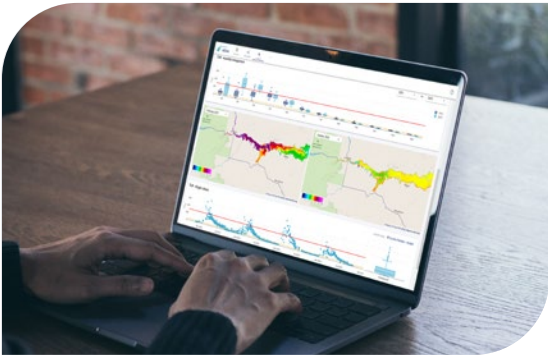
- Monitor large areas and multiple water bodies
- Access historical data as far back as the 1980s
- Detect trends, seasonal changes, and spatial patterns
- Combine with sensors in the water for informed decision-making
- Alarms and early warning detection keep you informed

### Features

-  User-friendly dashboards
-  Fast on-demand processing
-  Map view with parameter overlays
-  Fully physics-based, supported by AI
-  Optimized data from multiple satellites

[Learn More About eoapp AQUA](#)

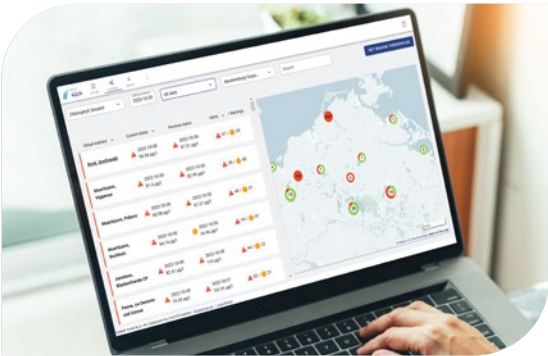
# Service packages



## **Baseline** *Annual, monthly, and historical data*

### Historical analysis

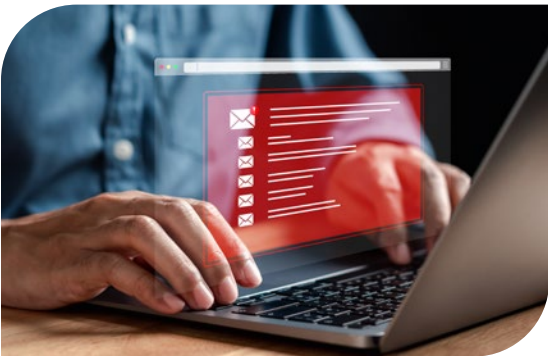
- Understand seasonality
- Detect trends and natural variability
- Identify spatial patterns



## **Monitoring** *Near-real-time statistics and visualization*

### Management and decision-making

- Near-real-time processing of current satellite data
- Fast overview of all areas of interest (AOIs)
- Statistics and visualization in the dashboard
- Identify spatial patterns



## **Alert** *Early warning notification*

### Direct notifications when thresholds are exceeded

- Near-real-time processing
- Receive notifications via email
- User-defined thresholds for each site
- Combine different data for early warning indicators

eoapp AQUA can provide additional insights into various applications including monitoring potential harmful algal blooms, drinking water safety, habitat assessment, infrastructure planning, long-term climate change analysis, and ecological trends. Alerts keep you informed during rapid changes in conditions.



YSI Incorporated  
1725 Brannum Lane  
Yellow Springs, OH 45387

Tel +1 937.767.7241  
Email [info@ysi.com](mailto:info@ysi.com)  
[YSI.com](http://YSI.com)



**xylem**  
Let's Solve Water